

NuTone®
haven™
Backyard Mosquito Repellent System



**Effective, Season-long*
Mosquito Protection
for your deck, patio
or porch**

*ASSUMES SEASON AS 90 DAYS/AVERAGE USE 2.4 HOURS PER DAY

NuTone[®] haven[™]

Backyard Mosquito Repellent System



440 sq. ft. Zone
of Season Long Protection*

Now backyards have a powerful new weapon in the fight against mosquitoes

Introducing NuTone[®] Haven[™], a revolutionary Backyard Mosquito Repellent System that produces an invisible zone of protection which repels biting mosquitoes. Each Haven Mosquito Repellent Fixture contains a Vaporizer that releases an odorless, invisible repellent that protects a 12-ft. diameter area.



**Provides
Protection**
WITHIN 15 MINUTES



**3-Year
Warranty**



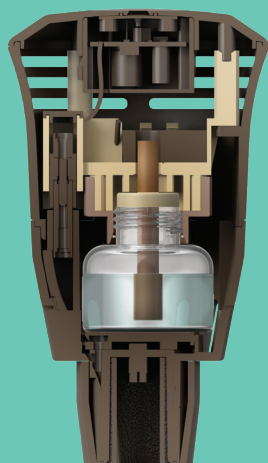
**Durable
Construction**
INSTALL ONLY ONCE, ENJOY
SEASON AFTER SEASON



**Over
216 Hours**
OF MOSQUITO PROTECTION PER
EACH REPELLENT CARTRIDGE

*ASSUMES SEASON AS 90 DAYS/AVERAGE USE 2.4 HOURS PER DAY

NuTone Haven helps you retake control of your yard!



Fixtures

CREATE YOUR OWN PROTECTION ZONE WITH NUTONE HAVEN.

DESIGNED FOR PERMANENT INSTALLATION, EACH FIXTURE COVERS A 12 FT. DIAMETER.



Repellent Cartridges

EACH CARTRIDGE PROVIDES UP TO 216 HOURS OF MOSQUITO PROTECTION ALL SUMMER LONG.*

HARMLESS TO PEOPLE AND PETS,** THE REPELLENT IS EFFICIENT FOR ALL TYPES OF MOSQUITOS.



Controller

JUST PRESS THE CONTROL BUTTON TO TURN THE SYSTEM ON OR OFF. LED INDICATOR WILL FLASH TO INDICATE IT'S TIME TO CHECK OR REPLACE REPELLENT.

THE CONTROLLER MUST BE CONNECTED TO A 120 VOLT AND WATERPROOF ELECTRIC SOCKET.

**REGISTRATION NO. 32988 PEST CONTROL PRODUCTS ACT



Up to 440 sq. ft.

The starter kit contains 4 fixtures, for the coverage of a 440 sq. ft. area.



4-PACK KIT HVK400

- 4 FIXTURES
- 4 REPELLENT CARTRIDGES
- LOW-VOLTAGE WIRE
- 1 CONTROLLER



4-PACK REPELLENT REFILL HVR400

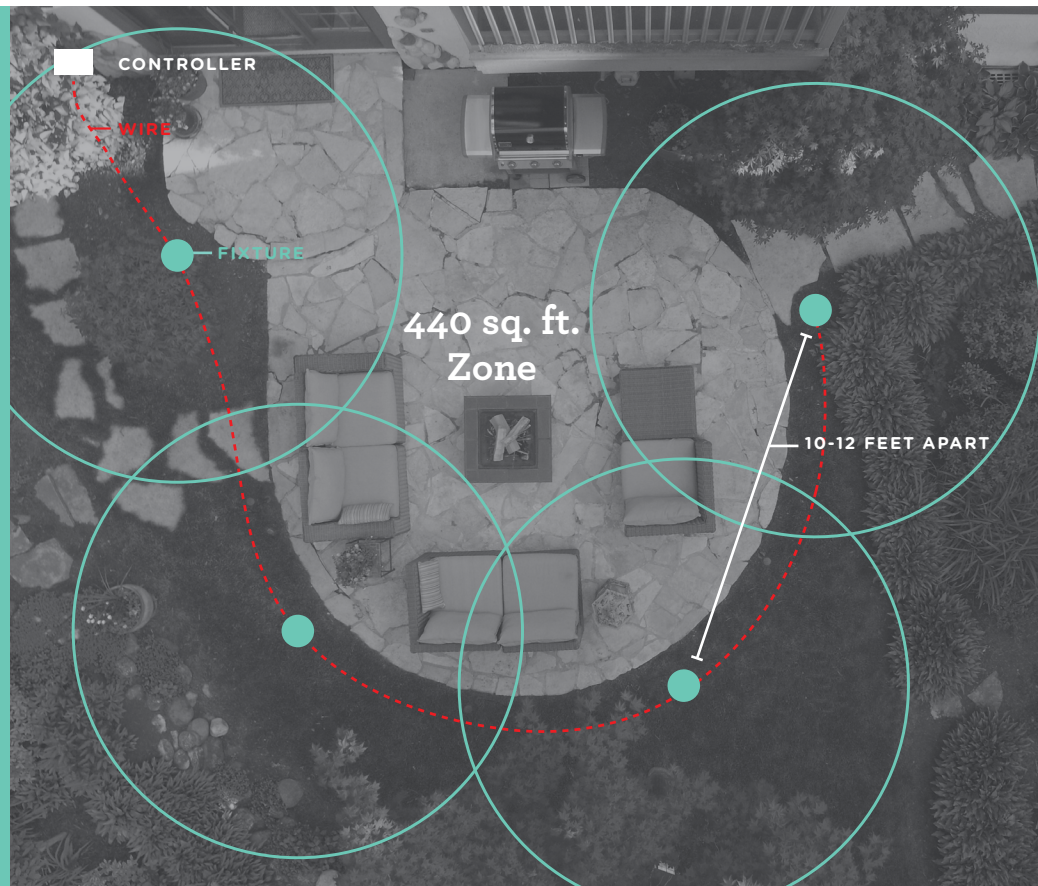
- 4 REPELLENT CARTRIDGES

*ASSUMES SEASON AS 90 DAYS/AVERAGE USE 2.4 HOURS PER DAY

Installation Planning Guide

This is an important step to consider before starting your installation. It will help you to figure how many fixtures you need to cover your area. The controller can support a maximum of 5 fixtures. We recommend the installation of the 5 fixtures at the same time.

- ① Measure your patio, porch, or deck
- ② Determine location for controller
- ③ Lay electrical cable down to outline your protection zone
- ④ Determine the best location for each fixture



Easy 5-step Installation

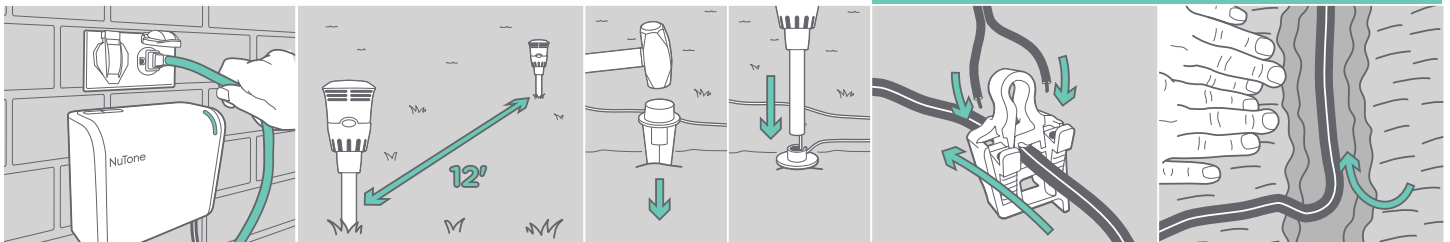
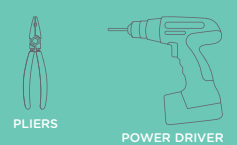
NuTone Haven system has been designed to be installed by do-it-yourselfers in 5 easy steps in less than 2 to 3 hours. It operates with low-voltage, so there is no need for an electrician.

TOOLS NEEDED

REQUIRED



OPTIONAL



- ① MOUNT AND PLUG IN THE CONTROLLER
- ② SPACE FIXTURES 10 TO 12 FEET APART
- ③ HAMMER STAKES INTO THE GROUND AND SNAP FIXTURE INTO STAKE
- ④ CONNECT FIXTURE CABLES TO MAIN CABLE
- ⑤ BURY FIXTURES AND MAIN CABLE