



# Overture™ Crestron Home Driver User Guide

## Overview

Package name (pkg) : Platform\_Broannutone\_Overture\_IP.pkg

Version : 1.0.0

You only need one instance of the platform driver. This will create extension drivers for every Room discovered in your Overture home for later configuration.

## Features

This driver provides the following functionality.

- Humidity, CO2, TVOC, Temperature, and PM2.5 feedback
- Light + Fan control
- Trigger events from sensor levels

## Broan-NuTone Configuration

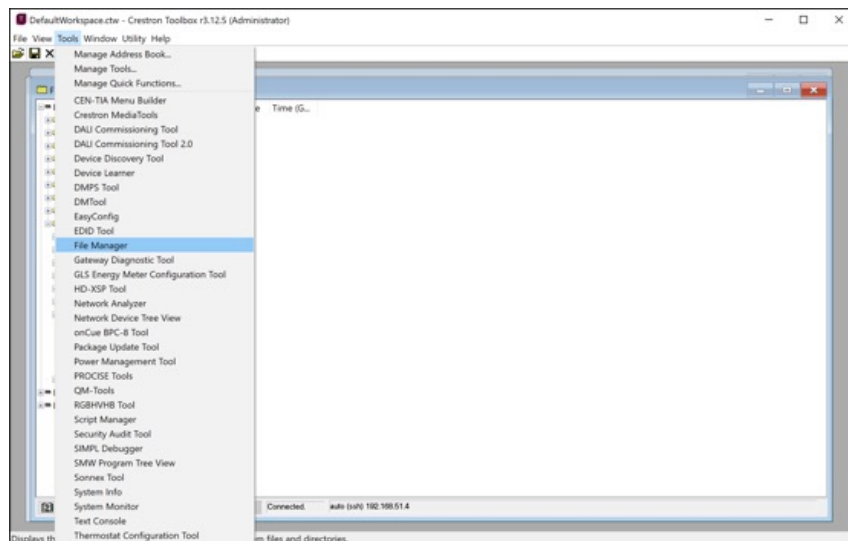
Prior to setting the driver up in Crestron Home ensure that the Overture system is fully configured and works correctly.

Please refer to <https://www.broan-nutone.com/en-us/support> to setup the system.

## Driver Configuration

Prior to Driver Setup ensure the Broannutone driver is side loaded through the Crestron Toolbox

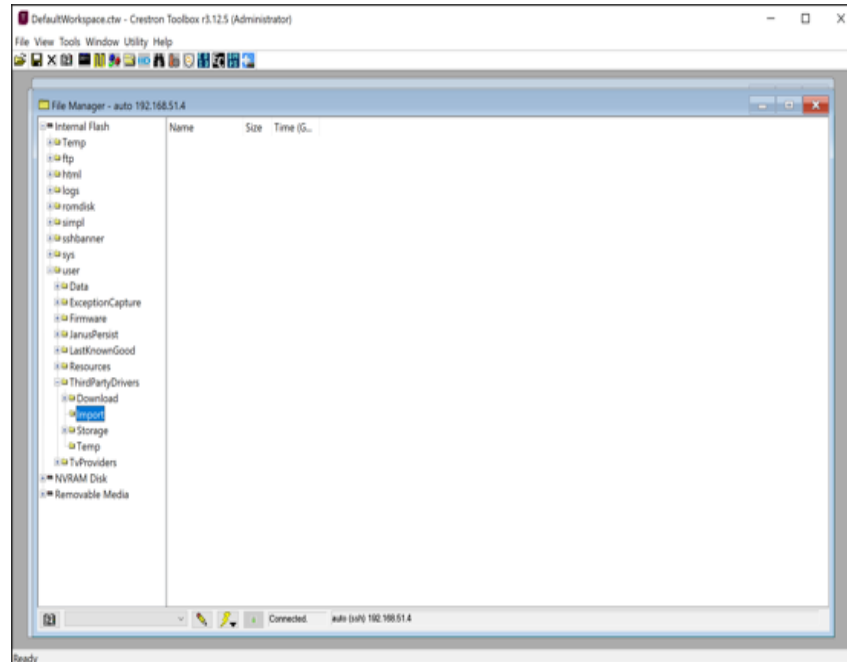
=====  
Open Crestron Toolbox



=====  
Click Tools  
Select File Manager

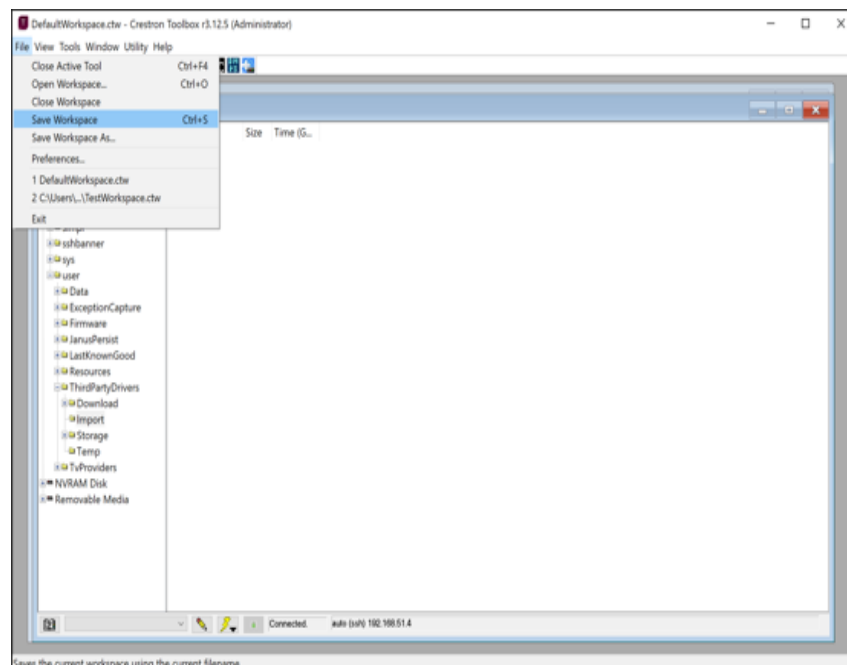
# Overture™ Crestron Home Driver User Guide

=====  
 Navigate to Internal Flash/  
 User/ThirdPartyDrivers/  
 Download/Import  
 Drag and drop the  
 Broannutone driver in this  
 location



=====  
 Navigate to File, Save  
 Workspace

Reboot Crestron Home  
 controller for updates to  
 take place



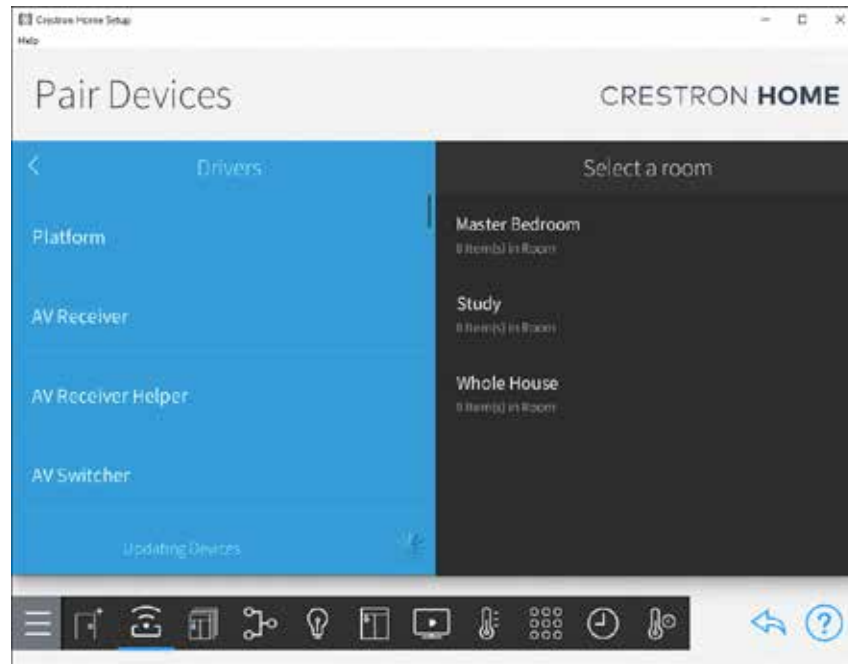
# Overture™ Crestron Home Driver User Guide

## Driver Setup

In Crestron Home Setup on the "Pair Devices" screen :  
Select Drivers and wait for the spinner to stop to allow drivers to update

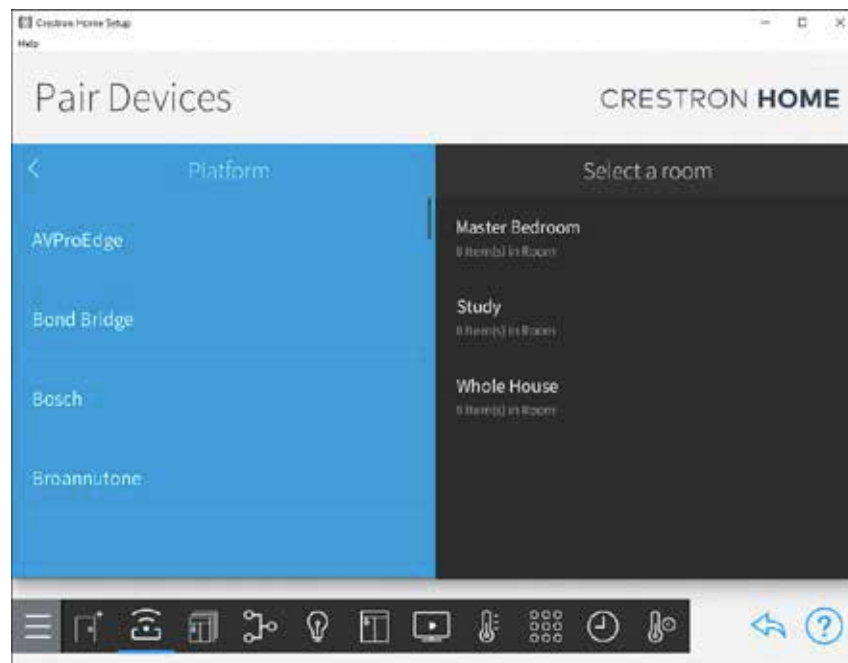
=====

Select Platform.



=====

Select Broannutone.

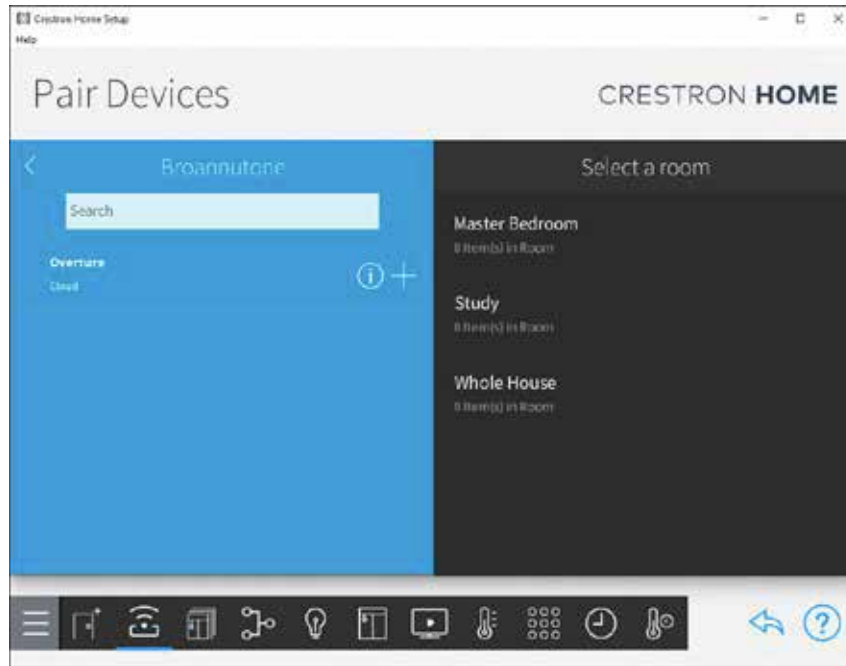




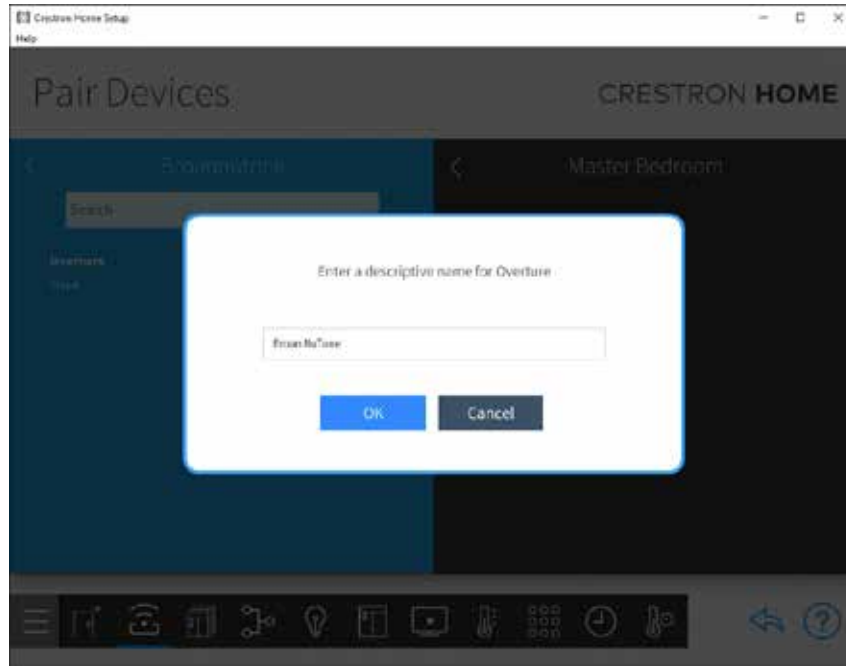
# Overture™ Crestron Home Driver User Guide

=====

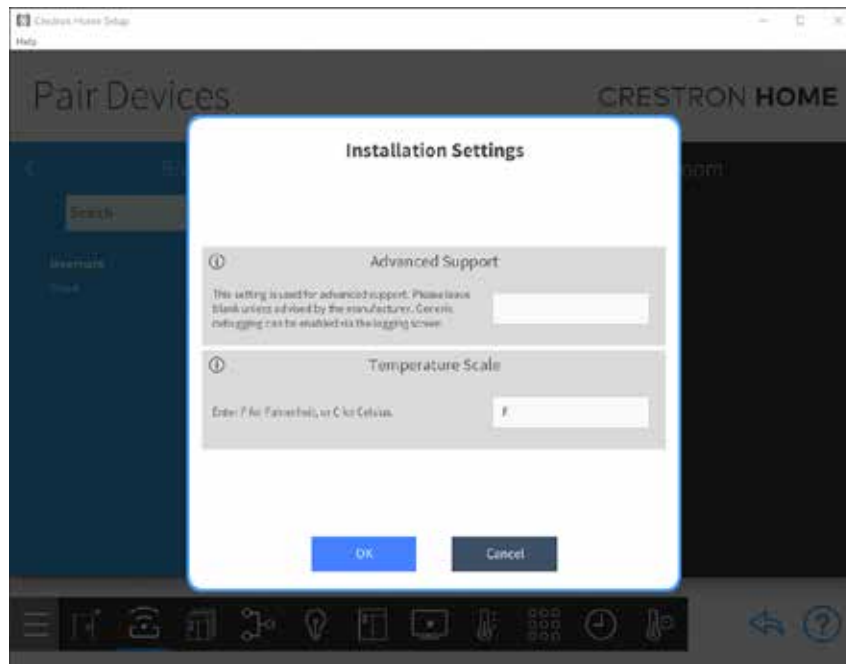
Select a room and click the plus button next to Overture to install the platform driver in the room.



# Overture™ Crestron Home Driver User Guide



=====  
Leave Advanced Support  
blank.  
Enter either F or C for the  
field Temperature Scale.  
Select OK.

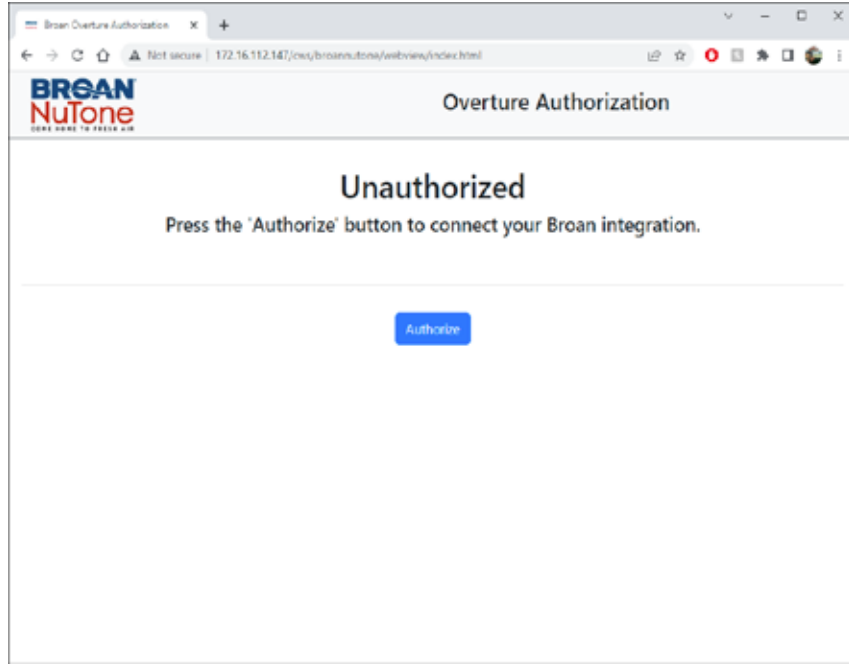




# Overture™ Crestron Home Driver User Guide

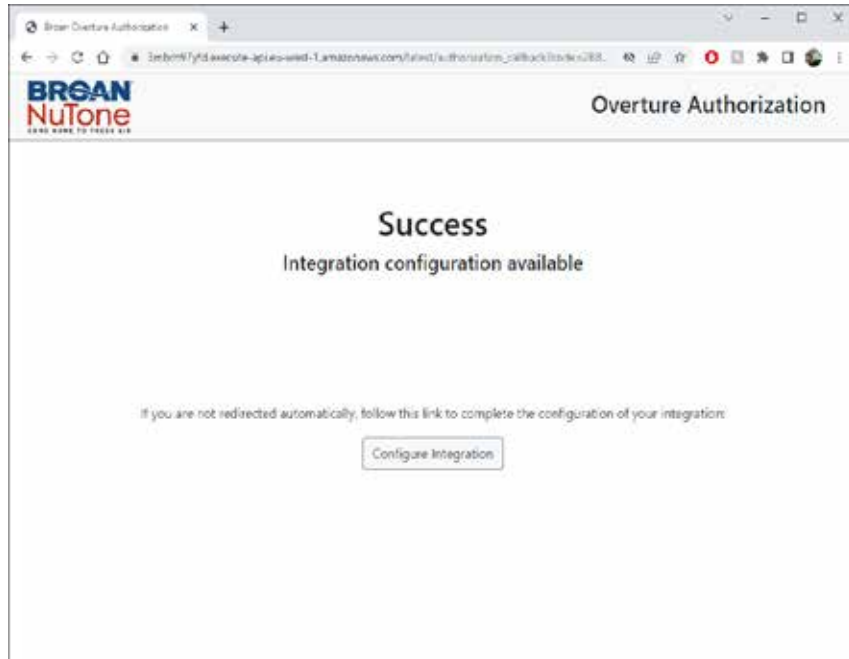
=====

The driver now requires authorization. Open a web browser, and navigate to the following URL:  
`http://<ip_address>/cws/broannutone/webview/`  
Replace `ip_address` with the IP Address of your Crestron Home processor.  
Press on the Authorize button.



=====

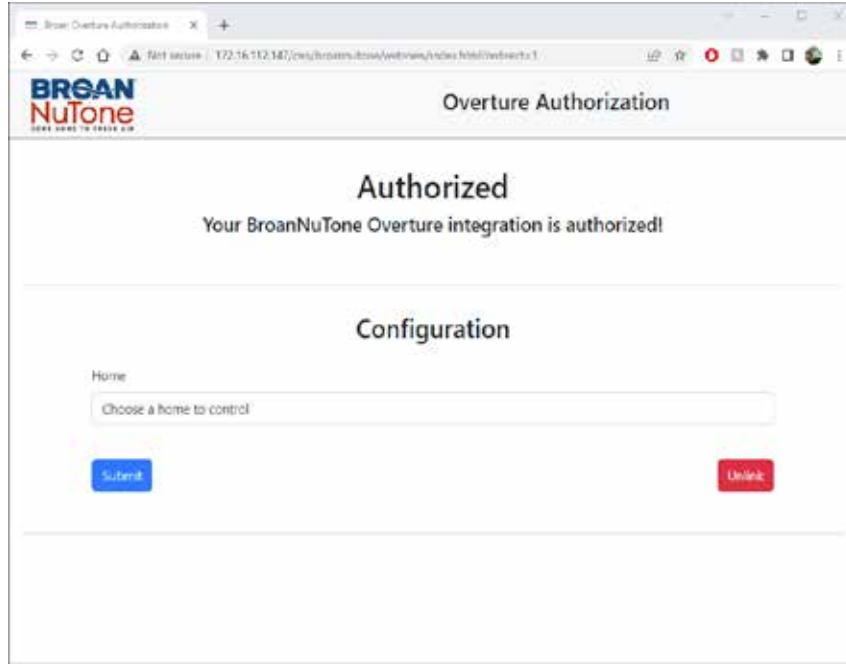
Once you have been redirected to the Overture login page, enter your Overture account credentials, and you will be redirected back to a configuration page after a few seconds.



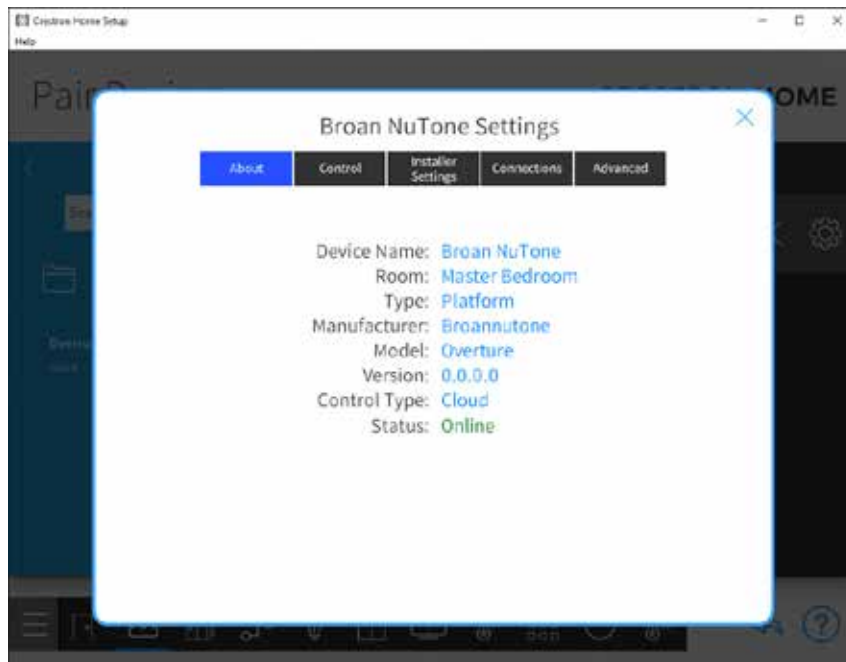


# Overture™ Crestron Home Driver User Guide

=====  
Choose the Overture home you wish to control from the available dropdown list, and press Configure.



=====  
The platform driver status in Crestron Home should now show Online.



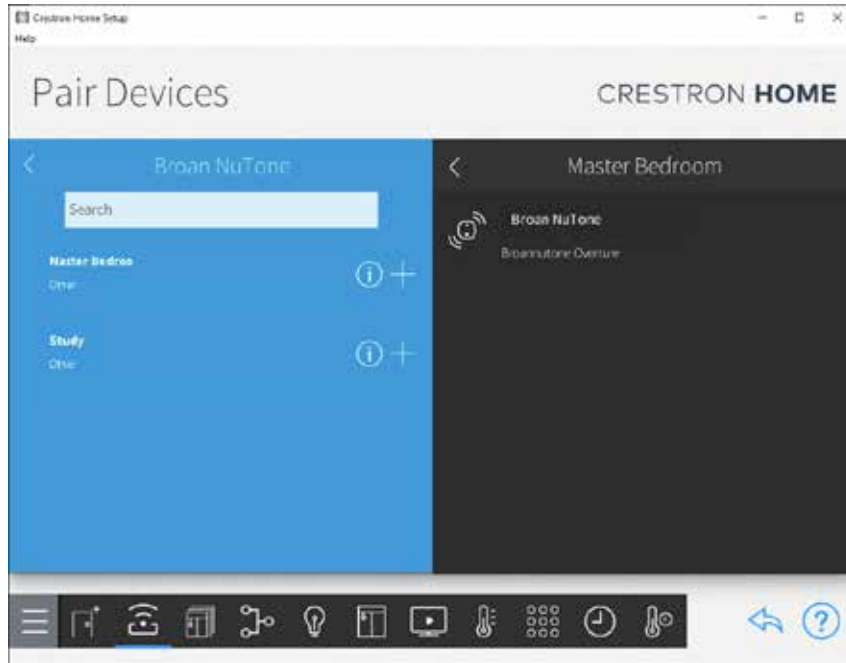
Continued...



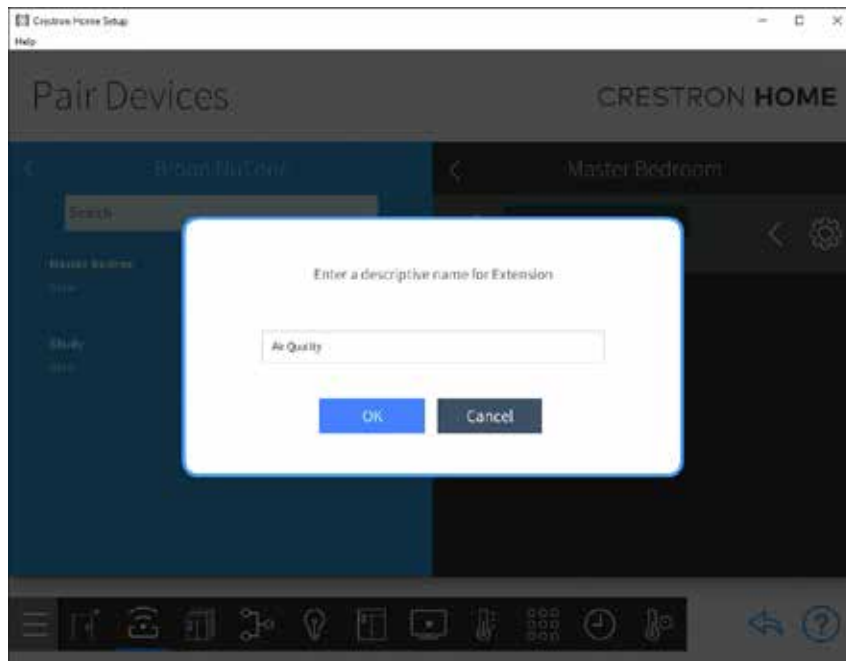
# Overture™ Crestron Home Driver User Guide

When the driver has connected, you have completed authorization and chosen a home, it will automatically create extension drivers for each room that has been discovered.

=====  
Select the folder and add an extension driver to a room.



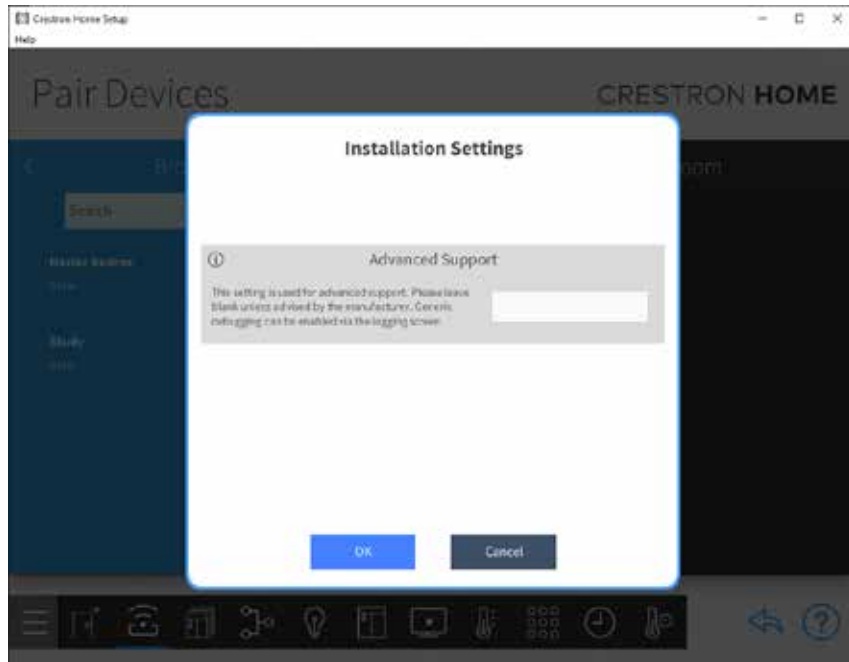
=====  
Select OK.



Continued...



# Overture™ Crestron Home Driver User Guide



## Extension Drivers

### Functionality Provided

The Extension driver supports the following functionality.

- Device selection within the room
- Humidity, CO2, TVOC, Temperature, and PM2.5 feedback
- Light + Fan control
- LED Intensity control
- Do Not Disturb control

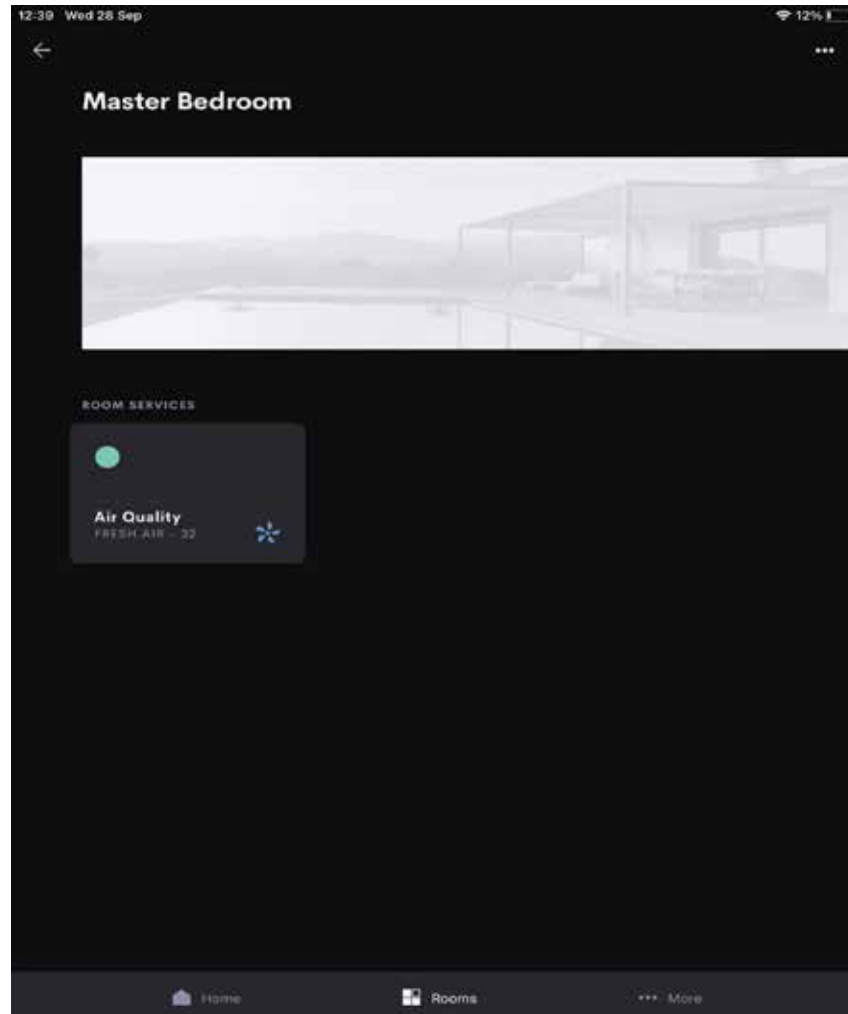
## Interface

When you select a room from the Crestron Home UI, the Air Quality extension driver will appear as a tile.

This tile shows the overall air quality in the room (green, yellow, red), along with verbiage to describe the state of the room, and a 0-100 IAQ score (lower scores represent better air quality).

If any Overture devices in the room have relay functionality, such as a light or fan, the state of the primary function will be displayed in the bottom right of a tile, via an icon state.

# Overture™ Crestron Home Driver User Guide



Select the Overture extension driver to bring up the air quality interface.

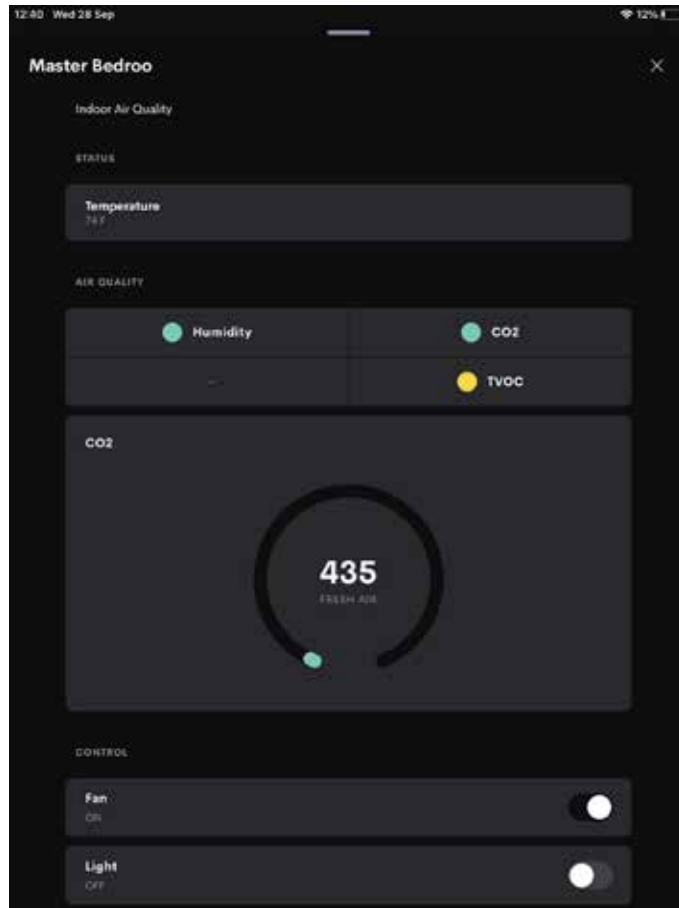
This screen gives you more information about each device in the room.

The Status section shows the current temperature of the room, and indicates if Do Not Disturb mode is active.

The Air Quality section gives detailed information for the levels of humidity, CO2, TVOC, and (if available), PM2.5 measured from the device.

The Control section gives you the ability to control any functionality attached to the device, for example, fans and lights.

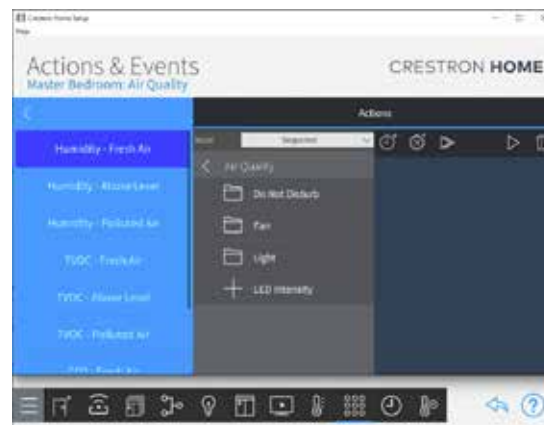
# Overture™ Crestron Home Driver User Guide



If multiple devices are present within the room, switch between them using the device selector at the top of the screen.

## Actions and Events

The extension drivers provide automation controls via the Actions and Events interface in Crestron Home configuration.





# Overture™ Crestron Home Driver User Guide

## Troubleshooting

- If no extension drivers get created this could either be because your driver is not authorized, or you have not selected a home to control. Check the authorization and configuration status from a web browser, by navigating to [http://<ip\\_address>/cws/broannutone/webview](http://<ip_address>/cws/broannutone/webview).
- If there are driver connection issues, please check that there is only one platform driver in your project at any one time.
- The platform driver always reports as online even if it isn't connected to the cloud. This is a current known issue with Crestron Platform drivers.
- Make sure the User Interface Device Password has been enabled in the Crestron Home Setup Tool as this will enable the touch panel control via iPhone/iPad apps etc.
- After initial setup, if you edit the temperature scale of the platform driver or change the controlled home, it is recommended to reboot the Crestron Home Processor afterwards. This is to work around current known issues with Crestron Platform Drivers.

## Support

If you require support for this driver please fill in a support request at <https://janustechnology.co.uk/support/>

Please ensure you provide the following information.

- Driver version you are using.
- Platform you are using i.e. Crestron Home
- Firmware version of your Crestron system.
- A full description of the issue you are having and how to recreate the issue.

## Broan-NuTone Overture Crestron Home Driver Release Notes - Changes

Driver Release Version: 1.0.0 - Home Release  
25th August 2023

### Version

- Crestron Home Version: 3.016.0109
- Crestron Home Setup Version: 1.0.32
- Crestron Home SDK: 16.0000.0062