

Features

This driver provides the following functionality.

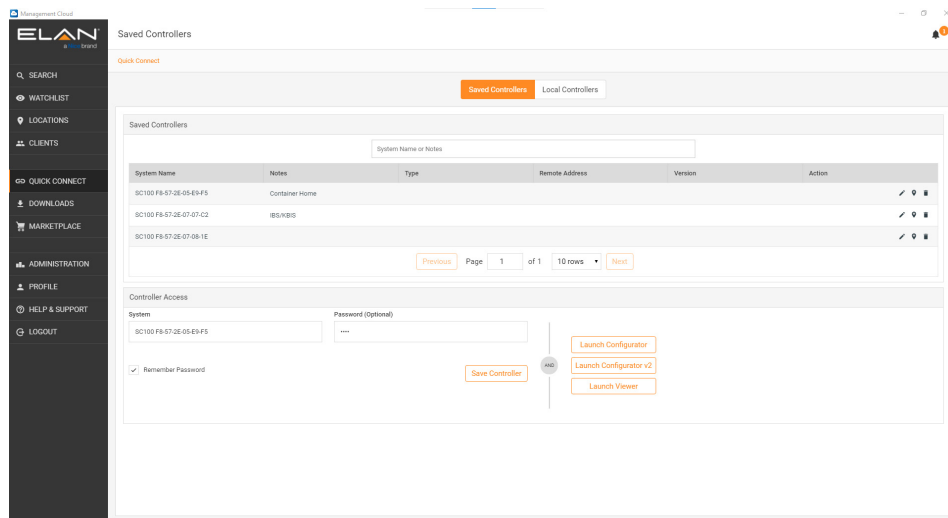
- Humidity, CO2, TVOC, Temperature, and PM2.5 feedback
- Light + Fan control
- LED Intensity control
- Do Not Disturb control

Broan-NuTone Configuration

Prior to setting the driver up on Elan ensure that the Overture system is fully configured and works correctly. Please refer to <https://www.broan-nutone.com/en-us/support> to setup the system.

Driver Setup

- In the Elan Management Cloud Software launch the Elan Configurator for the controller.
- Select your system either by selecting from Saved Controllers, or Scan Network under Local Controllers.
- Select your system and enter the pin if needed, and Launch Configurator.

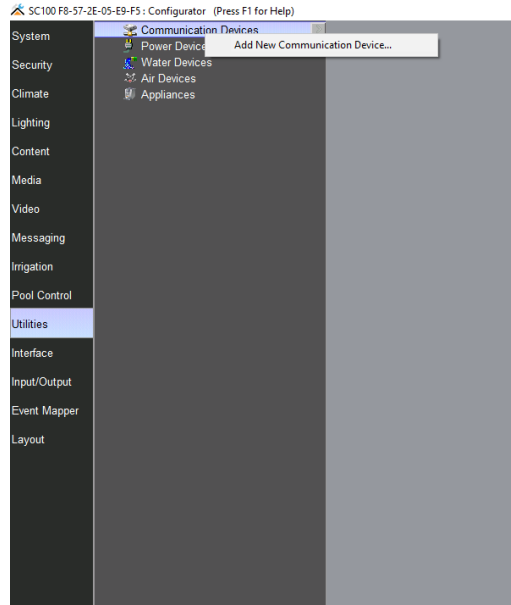


Overture™ Elan Driver User Guide

In the Configurator:

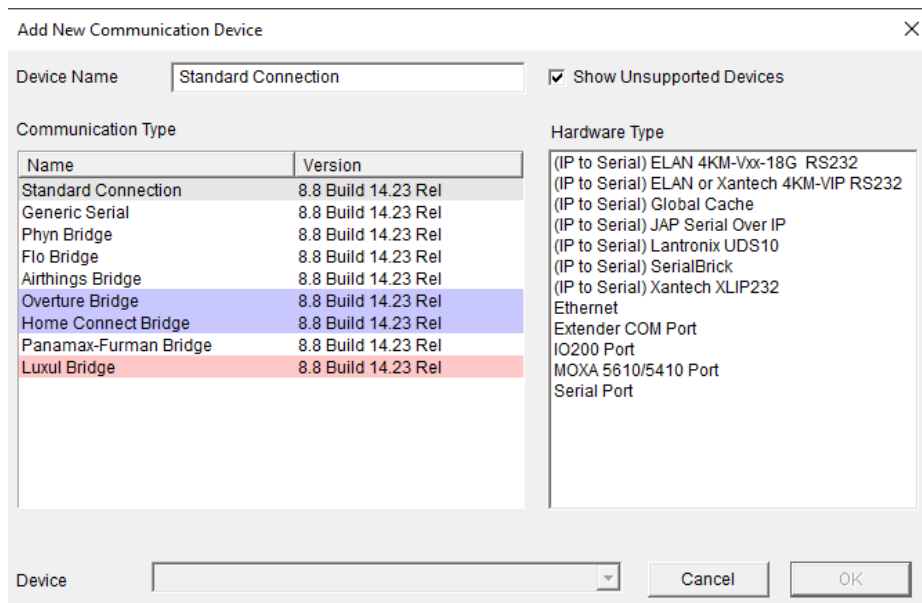
Select the Utilities tab.

Right click on Communication Device and select Add New Communication Device.



Select the Show Unsupported Devices checkbox.

The Overture Bridge driver will appear.



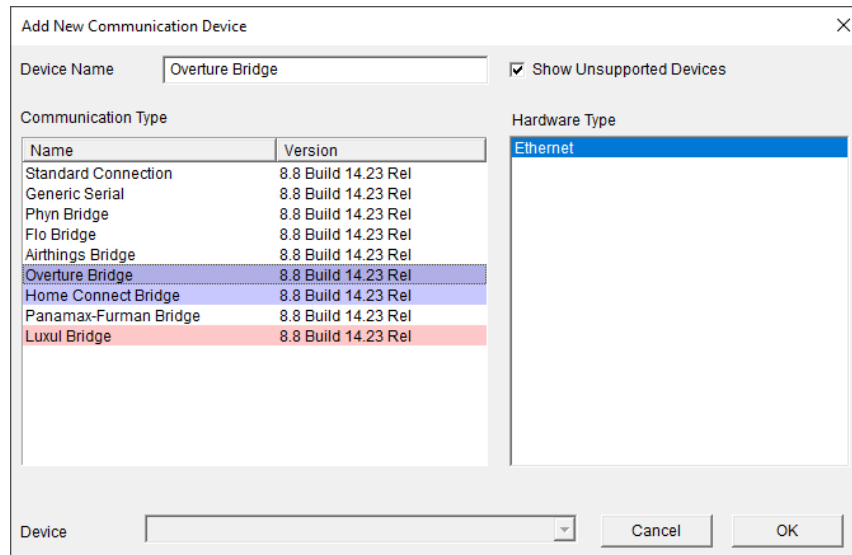
Continued...

Overture™ Elan Driver User Guide

Select Overture Bride.

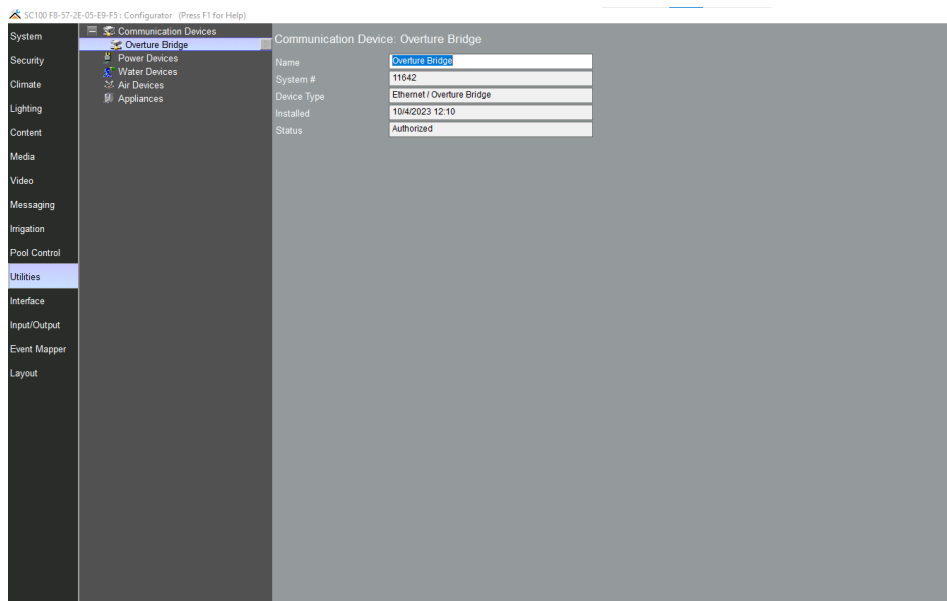
Click OK.

Click OK on popup.



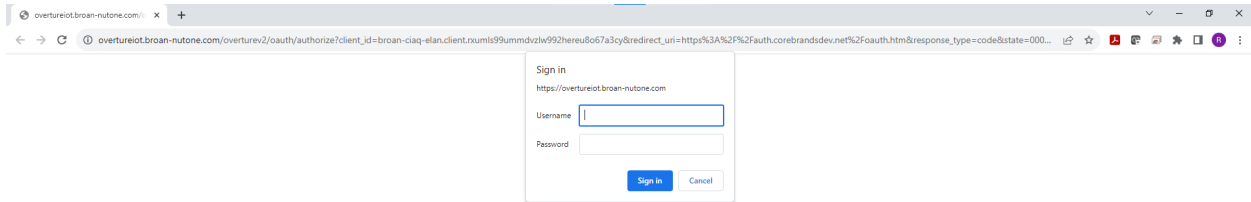
The Overture Bridge is now listed under communication Device, but it requires authorization to a specific Overture Account.

Press on the Authorize button.

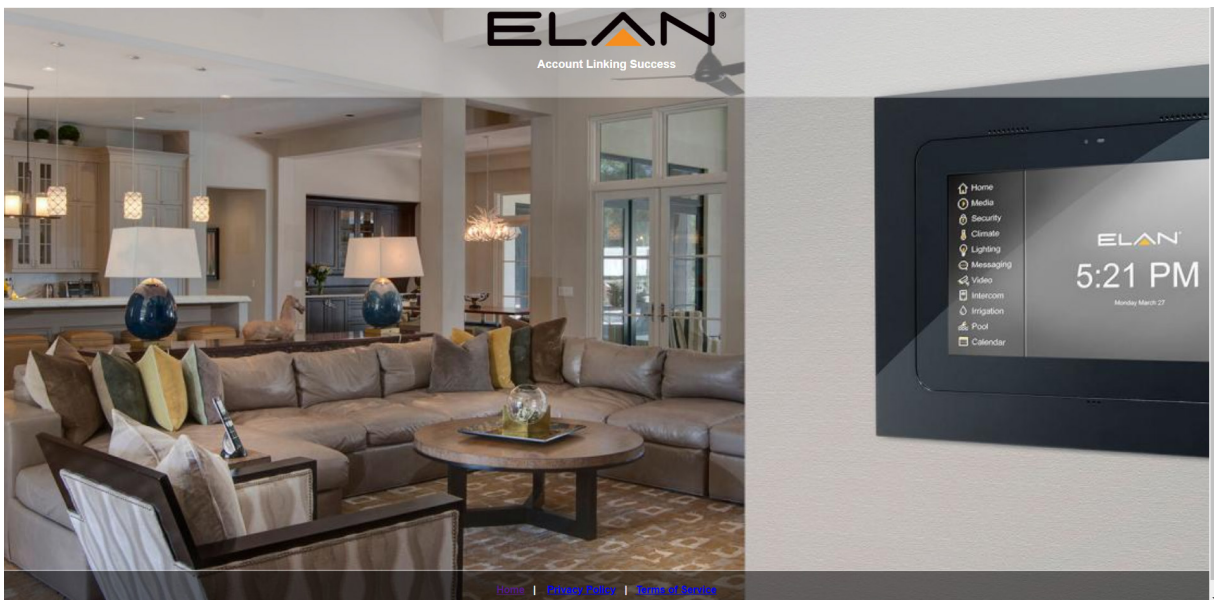


Overture™ Elan Driver User Guide

Once you have been redirected to the Overture login page, enter your Overture account credentials.



You will be redirected to a success page after a few seconds which can be closed.

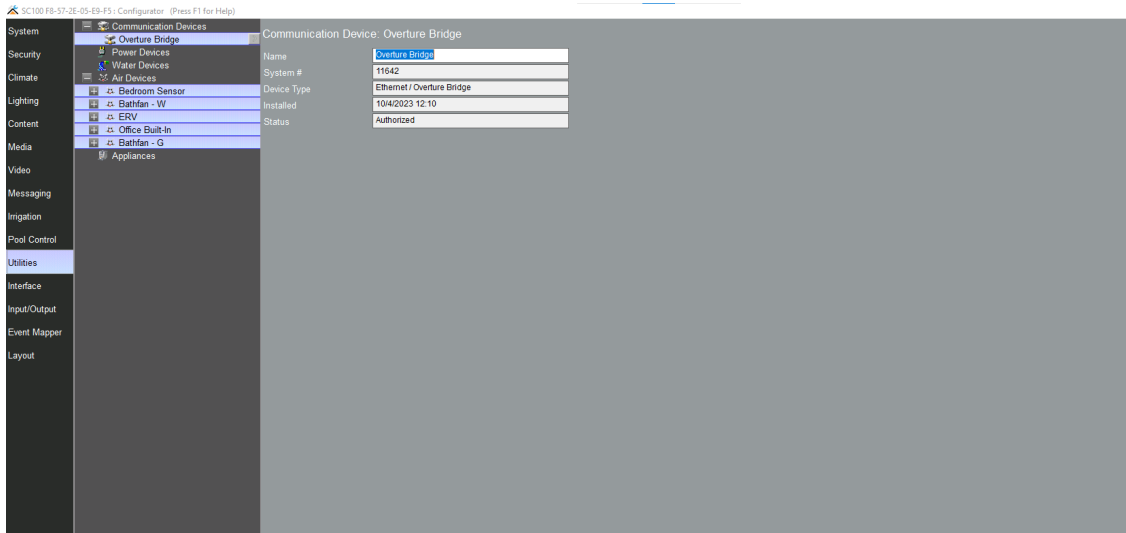


The Status will now show Authorized.

Click Discover Devices.

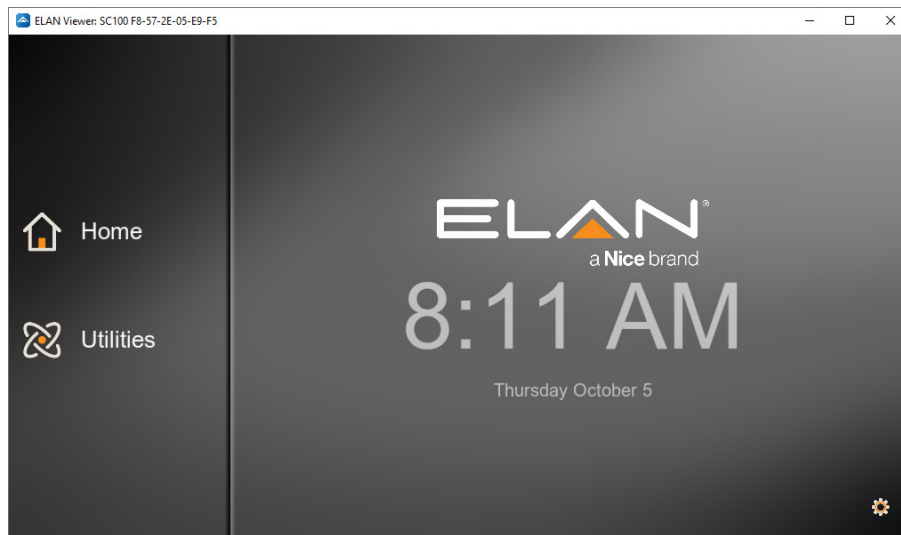
It will automatically populate all the Overture devices from the Overture home under the Air Devices category.

Overture™ Elan Driver User Guide



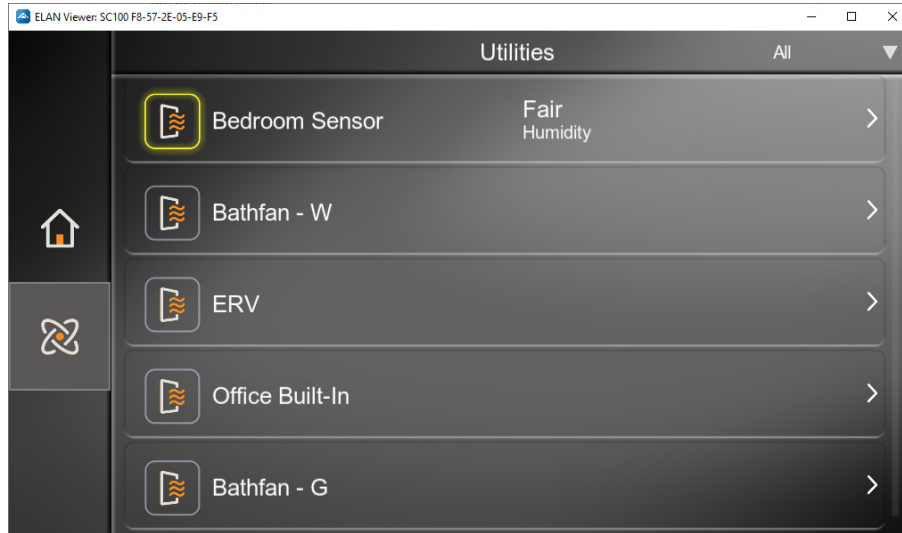
Interface

From the main page on the Elan UI, the driver will create the Utilities tab.



This tab shows all the devices from the Overture system. Icons with no highlighting denote good air quality in that room. But a yellow or red highlighted icon will indicate fair or poor indoor air quality and add the pollutant causing the issue.

Overture™ Elan Driver User Guide



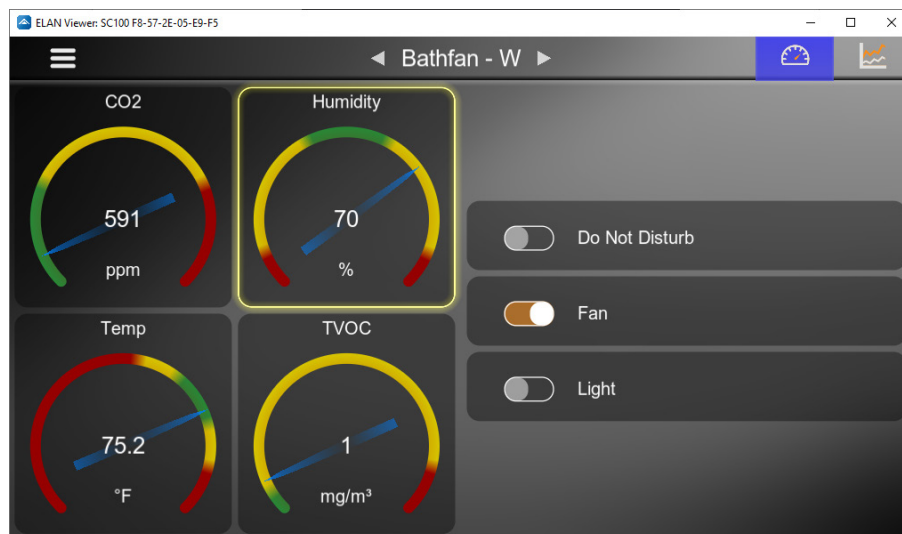
Select the Overture device to bring up the air quality interface.

This screen gives you more information about each device in the room.

The air quality gauges give detailed information for the levels of CO₂, humidity, temperature, TVOC, and (if available) PM_{2.5} measured from the device.

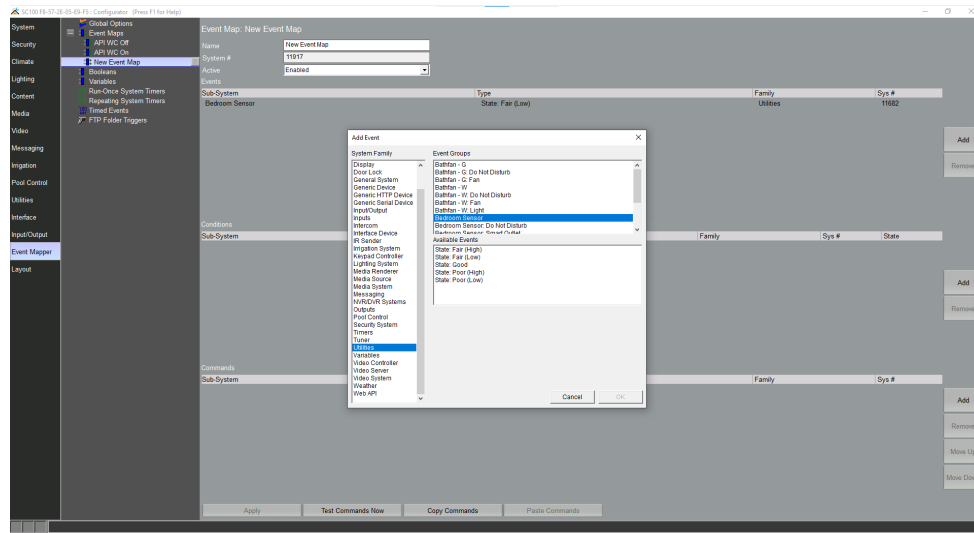
If a pollutant level is higher than the good threshold, the tile around that gauge will highlight yellow, or red indicating an elevated level.

The control section on the right side of the interface gives you the ability to control any functionality attached to the device, for example, fans, lights, and Do Not Disturb mode.



Action and Events

The driver provides automation control via the Event Mapper in the Configurator.



Troubleshooting

If the configurator screen freezes after the Authorization process, just click on another tab, then go back into the utilities page to refresh.

Support

If you require support for this driver, please fill in a support request at

<https://www.broan-nutone.com/en-us/home/customer-service>

Please ensure you provide the following information.

- Driver version you are using.
- Platform you are using i.e. Elan
- Firmware version of your Elan system.
- A full description of the issue you are having and how to recreate the issue.